

HITACHI
Inspire the Next

ACTIVITY BOOK

AGES 8-11



ACTIVITY BOOK

AGES 8-11

The Hitachi Rail team have been working hard to deliver new trains for passengers across the UK network. To try out the new fleet and take a well-deserved break, they are heading on an adventure from London to Cornwall! Join our team on their journey, where you can help them to complete some fun activities along the way and learn more about the exciting world of the railway...



Elo

Gus

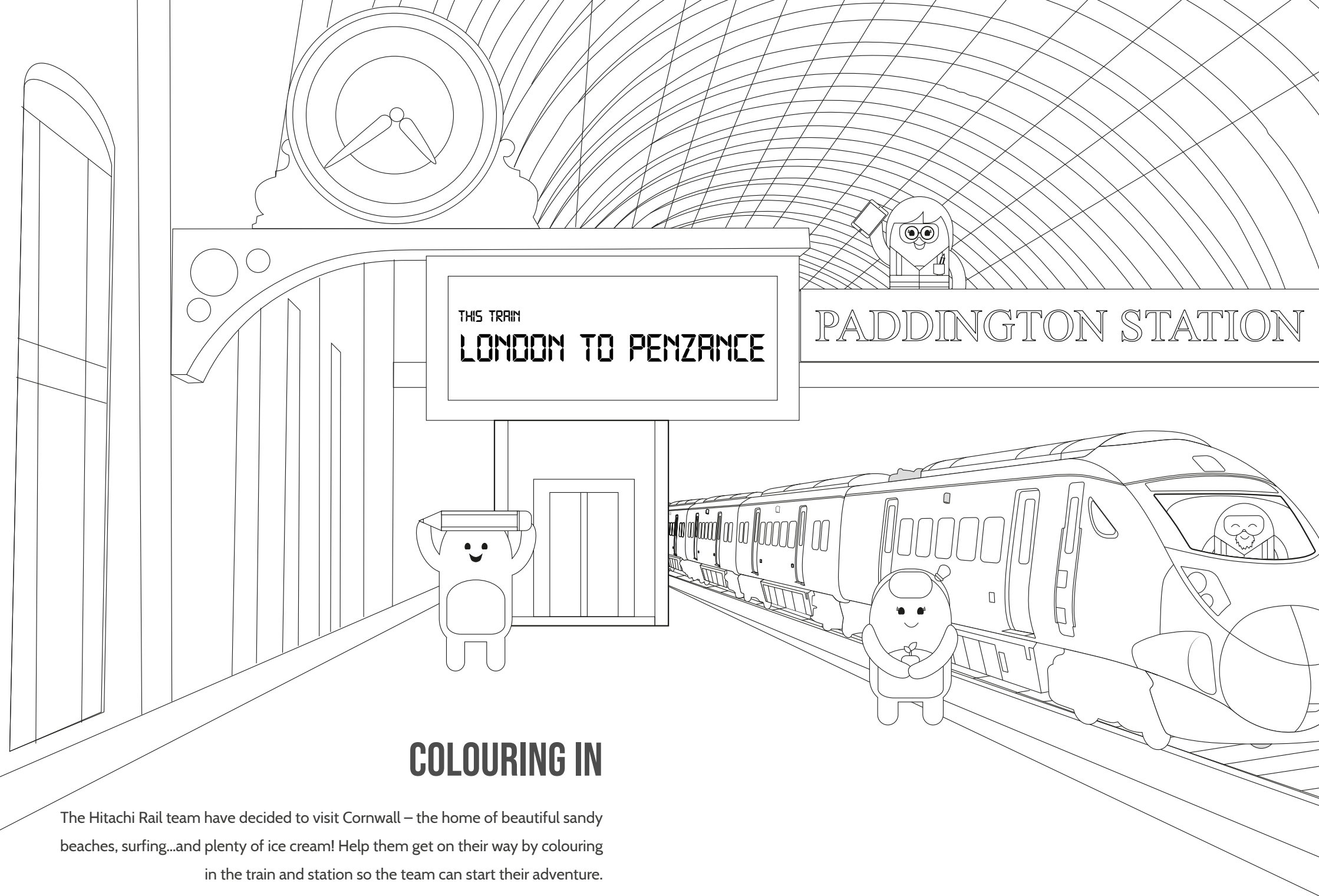
Fizz

Nelly



RULES OF RAIL SAFETY

1. Pay attention
2. No trespassing
3. Be wary of electricity
4. Take care at level crossings
5. Be safe



COLOURING IN

The Hitachi Rail team have decided to visit Cornwall – the home of beautiful sandy beaches, surfing...and plenty of ice cream! Help them get on their way by colouring in the train and station so the team can start their adventure.

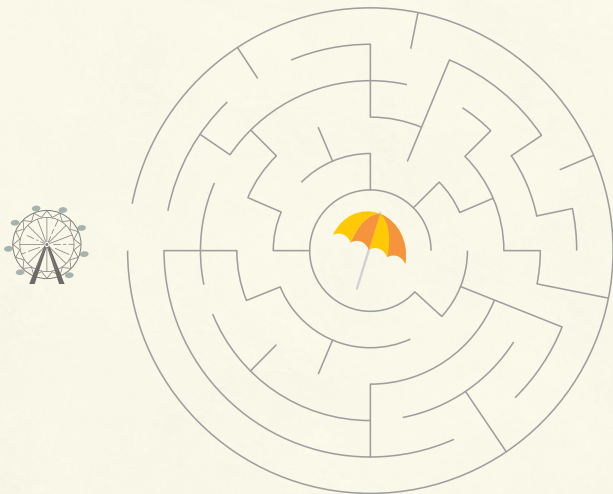
GUESS THE WORD

Fill in the missing letters to find the train-related words.

p _ _ s _ s _ _ n _ g _ _ r
r _ _ _ l w _ _ y
l _ _ v _ _ l _ _ c r _ _ s _ s _ _ n _ g

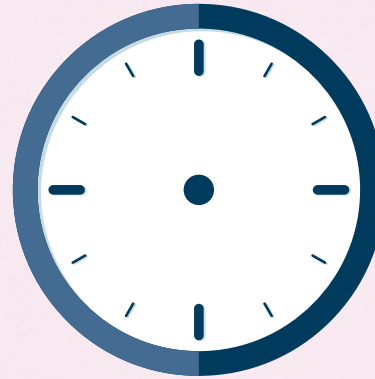
FOLLOW THE MAZE

Draw a line to show the path from London to Cornwall.

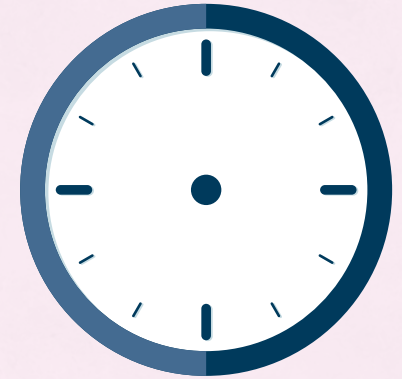


MATHS

Draw the hands on the clock to show what time the train arrived into the station.



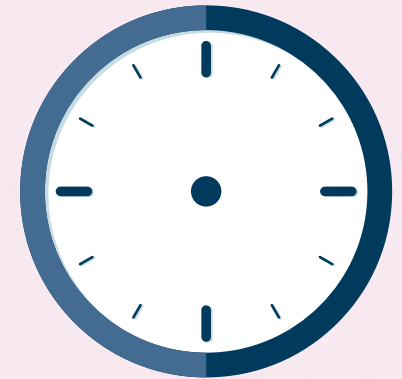
09:00



10:45



13:15



14:30

WORDSEARCH

Railway stations have lots of exciting things to see and often have a lot of history surrounding them. Did you know that Paddington station in London was designed by the famous engineer Isambard Kingdom Brunel? Can you find the words below in the word search to help our team continue on their adventure?

Track Carriage Station Destination Platform Ticket Wheel

U	T	M	A	H	M	Y	N	L	G	Y	J	C	Y	Y
O	P	D	Q	Q	O	M	U	P	J	C	N	K	L	B
Z	K	Y	N	L	S	X	M	E	E	O	M	X	J	U
B	N	J	T	I	S	Q	S	F	I	Y	U	J	P	E
M	H	N	E	P	C	F	X	T	F	N	T	W	N	E
P	E	U	K	P	L	A	A	B	F	U	A	Z	A	V
Y	Z	J	C	L	X	N	R	L	G	E	E	Y	G	U
Z	H	N	I	A	I	S	X	R	K	F	M	T	L	X
R	E	R	T	T	F	T	K	P	I	Z	R	W	U	Y
P	B	R	S	F	X	A	Z	L	F	A	V	U	Y	L
Y	V	E	Y	O	D	T	X	M	C	K	G	T	Z	E
V	D	S	F	R	Z	I	L	K	Z	O	V	E	Q	E
Q	Y	F	G	M	A	O	X	H	E	D	P	V	V	H
T	O	M	E	S	S	N	S	J	X	A	O	Y	E	W
O	O	V	W	H	U	D	F	N	G	E	R	Y	A	H



SPOT THE HAZARD

Rail safety is important – when you arrive at the station, when you board the train and when you're on your journey. It's important to look around and understand where accidents might happen and how you and your friends can avoid them. On the picture above there are four potential hazards that might cause an accident – can you find all four?

QUESTIONS

What is the maximum speed of our Javelin train?

140 miles per hour

14 miles per hour

1.4 miles per hour

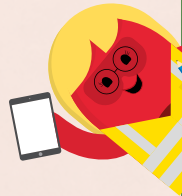


An average elephant weighs 5 tonnes and an InterCity train weighs 400 tonnes. How many elephants is this?

8

800

80



How many miles of track do you think make up Great Britain's rail network?

994,100

9,941

941

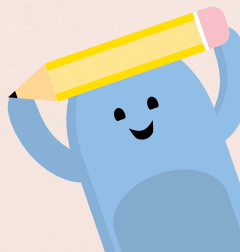
The Severn Tunnel is one of Britain's longest railway tunnels and links England with Wales. It is 4.5 miles (7 kilometres) long.

How many hours would it take you to walk through the tunnel on foot?

2 hours

24 hours

200 hours



ANSWERS

Page 6

passenger
railway
level crossing

Page 7



09.00



10.45

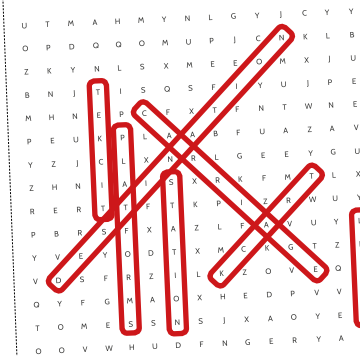


13.15

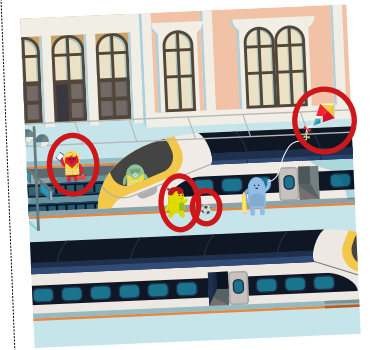


14.30

Page 8



Page 9



Page 10

140 miles per hour, 80 elephants, 9,941 miles, 2 hours

DID YOU KNOW?

22,500 trains run in Great Britain every day.



HITACHI
Inspire the Next

www.hitachirail.com

Visit our website to see how we are developing the brightest talent, to help meet the future transport needs for the next 50 years and beyond.